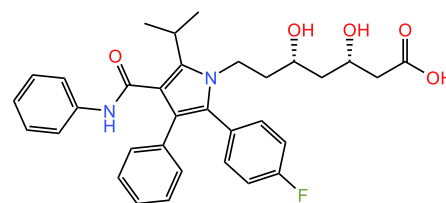
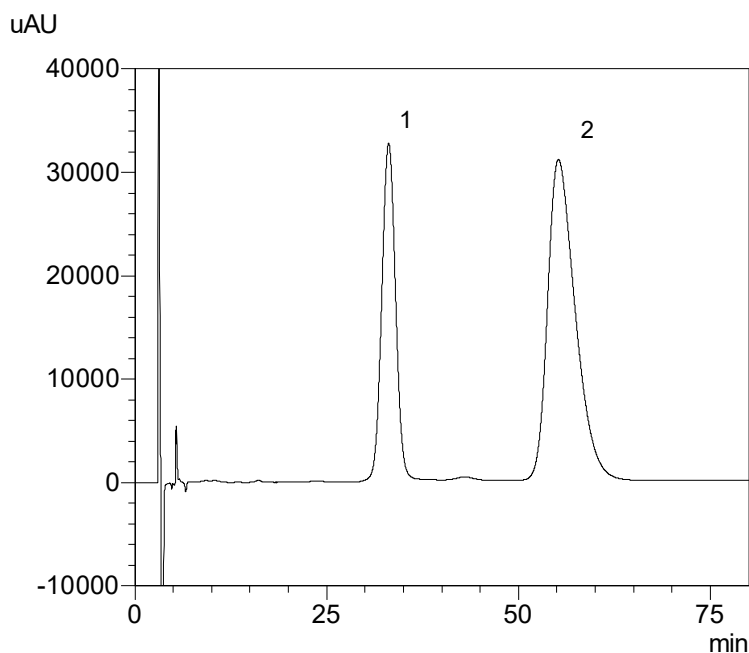


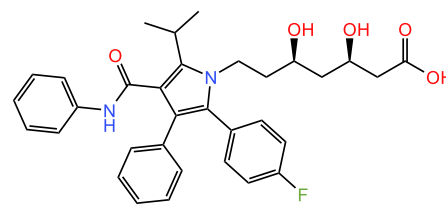
ShimOMNIA Chiral

Analysis of Atorvastatin Enantiomers

Keywords: Atorvastatin, Enantiomer



1. Atorvastatin Impurity E



2. Atorvastatin

Column	: ShimOMNIA Chiral Amylose-1 (250 mm x 4.6 mm I.D., 5 μm), P/N: 226-55924-03
Mobile Phase	: Hexane/Ethanol/trifluoroacetic acid (940:60:1)
Flow rate	: 1 mL/min
Sample	: 1. Atorvastatin Impurity E (100 μg/mL) 2. Atorvastatin (100 μg/mL)
Injection vol.	: 20 μL
Detection	: UV 244 nm

Shimadzu Corporation

www.shimadzu.com/an/

SHIMADZU (Asia Pacific) Pte. Ltd,

www.shimadzu.com.sg

For Research Use Only. Not for use in diagnostic procedures.

This publication may contain references to products that are not available in your country. Please contact us to check the availability of these products in your country.

The content of this publication shall not be reproduced, altered or sold for any commercial purpose without the written approval of Shimadzu. See <http://www.shimadzu.com/about/trademarks/index.html> for details.

Third party trademarks and trade names may be used in this publication to refer to either the entities or their products/services, whether or not they are used with trademark symbol "TM" or "®".

Shimadzu disclaims any proprietary interest in trademarks and trade names other than its own.

The information contained herein is provided to you "as is" without warranty of any kind including without limitation warranties as to its accuracy or completeness. Shimadzu does not assume any responsibility or liability for any damage, whether direct or indirect, relating to the use of this publication. This publication is based upon the information available to Shimadzu on or before the date of publication, and subject to change without notice.

App-002A